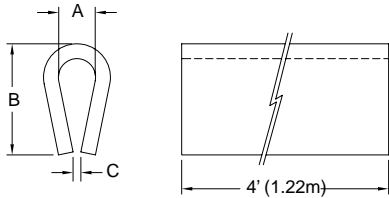




CHANNELS & INSULATORS

DSC
Nylon Grommet Edging

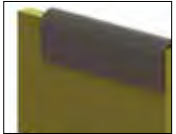


Specifications:

- Material: UL94 HB MDS Filled Nylon
- Color: Gray

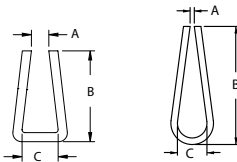
Features:

- Used as wear strips, non-abrasive edging, noise-reducing conveyor strips, framing, binding, or to protect from sharp edges
- Built-in lubricant for reduced friction and longer part life
- Resistant to ordinary solvents, mild acids and alkalis or fungus growth
- Comes in 4' lengths that can be cut to desired length



Item No.	A Fits Panel Thickness		B		C Ref		Wall Thickness		Length		Bulk Pack Qty.
	In	mm	In	mm	In	mm	In	mm	ft	m	
DSC-5-48	0.062	1.6	0.300	7.6	0.031	0.8	0.031	0.8	4	1.22	100 Ft
DSC-1-48	0.125	3.2	0.375	9.5	0.020	0.5	0.047	1.2	4	1.22	100 Ft
DSC-2-48	0.188	4.8	0.500	12.7	0.031	0.8	0.047	1.2	4	1.22	100 Ft
DSC-3-48	0.250	6.4	0.625	15.9	0.045	1.1	0.063	1.6	4	1.22	100 Ft

CH
Polystyrene Channel



Specifications:

- Material: ULB94 HB Polystyrene
- Color: White

Features:

- Protects from sharp edges
- Binds & frames
- Sold in 4' lengths that can be cut to desired length

Item No.	Fits Panel Thickness		A Ref		B Ref		C Min.		Figure	Length		Bulk Pack Qty.
	In	mm	In	mm	In	mm	In	mm		ft	m	
CH200X250-48	0.250	6.4	0.200	5.1	0.375	9.5	.25	6.4	1	4	1.22	100 Ft
CH15X50-48	0.050	1.3	0.015	0.4	0.437	11.1	.05	1.3	1	4	1.22	100 Ft
CH20X141-48	0.140	3.6	0.020	0.5	0.562	14.3	.14	3.6	2	4	1.22	100 Ft

OS
Straight Terminal Insulator

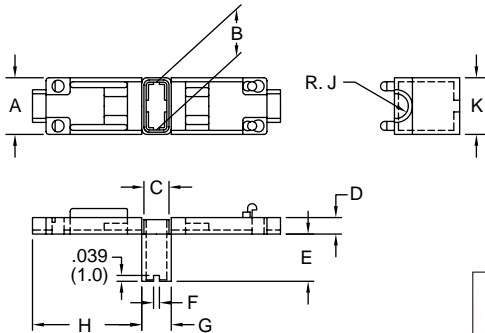


Specifications:

- Material: UL94 V-2 Nylon 6
- Color: Natural

Features:

- Insulating sleeve for straight type receptacles
- Installs easily by hand; slip the sleeve onto receptacle and snap shut with fingers
- For pre-assembled wire and receptacle



Item No.	Approval	Terminal Type	Wire Ø		A		B		C		D		E		F		G		H		R.J		K		Bulk Pack Qty.
			In	mm	In	mm	In	mm	In	mm	In	mm	In	mm	In	mm	In	mm	In	mm	In	mm	In	mm	
OS-187		Straight Type 187 Series	9/64	3.6	.346	8.8	.240	6.1	.106	2.7	.102	2.6	.268	6.8	.039	1.0	.154	3.9	.594	15.1	.071	1.8	.295	7.5	500
OS-250		Straight Type 250 Series	5/32	3.8	.386	9.8	.311	7.9	.164	3.4	.110	2.8	.315	8.0	.039	1.0	.185	4.7	.728	18.5	.081	2.1	.358	9.1	500